



Petrochemicals

Process Valves for Ethylene cracking



General Chemicals



Fine Chemicals



Plastics and Polymers



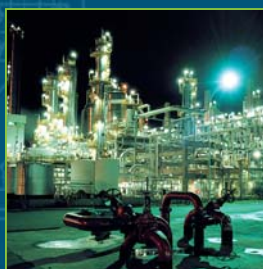
Nuclear and Navy



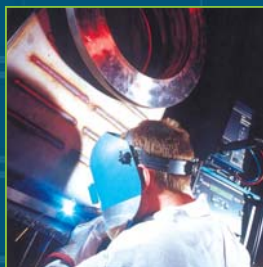
Cryogenic service



Other applications



4050

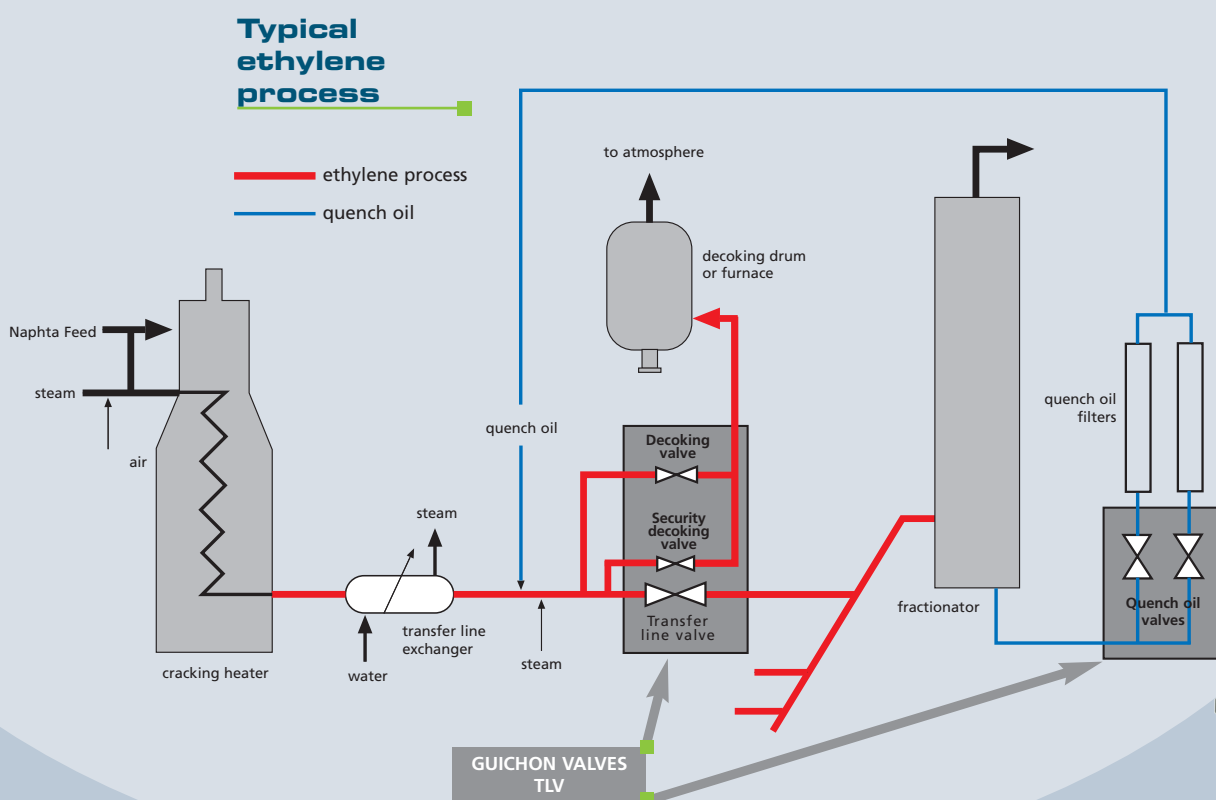


TLV
DN36"x30"

1-460



Increase valves reliability in transfer and decoking lines of ethylene units



Constraints related to steam cracking

- 1 The thermal cracking phase of the process generates effluent with coke particles.
- 2 The decoking phase of the process generates coke particles which can drop into the valve body during the opening-closing phase and damage the sealing system.

Guichon Valves proposes a valve design with sliding gate and sleeve combination to reduce ingress of coke particles.

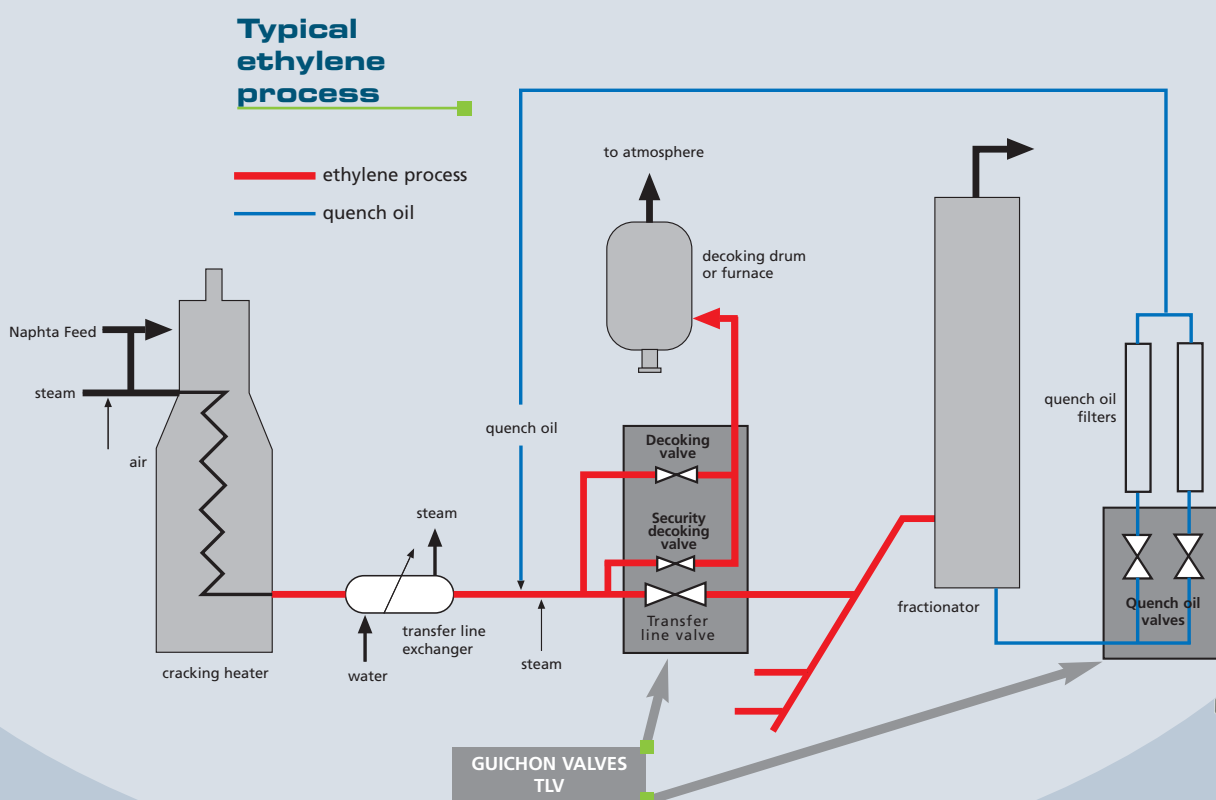
The third generation of Guichon Valves's Transfer Line Valves, TLV03, provides reliable, long lasting tight shut-off.

Transfer Line Valve





Increase valves reliability in transfer and decoking lines of ethylene units



Constraints related to steam cracking

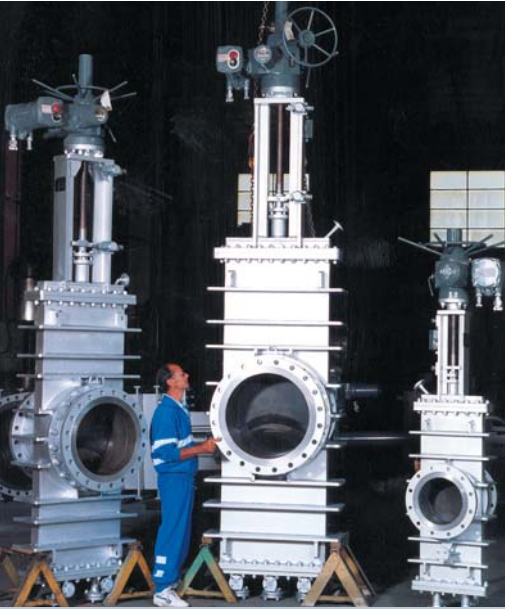
- 1 The thermal cracking phase of the process generates effluent with coke particles.
- 2 The decoking phase of the process generates coke particles which can drop into the valve body during the opening-closing phase and damage the sealing system.

Guichon Valves proposes a valve design with sliding gate and sleeve combination to reduce ingress of coke particles.

The third generation of Guichon Valves's Transfer Line Valves, TLV03, provides reliable, long lasting tight shut-off.

Transfer Line Valve



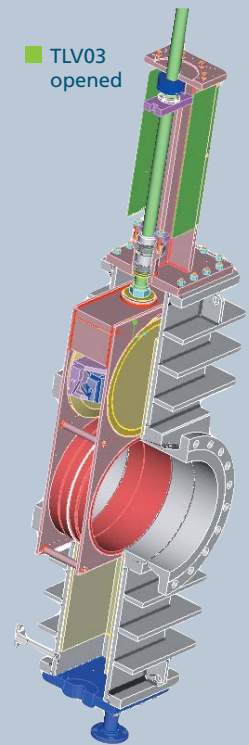
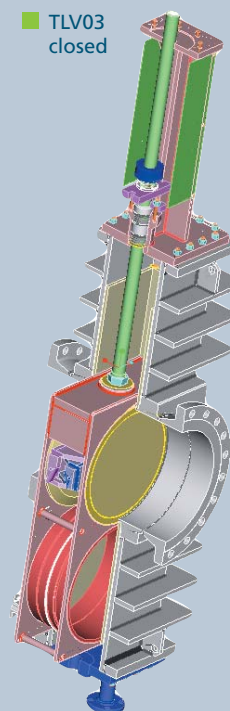
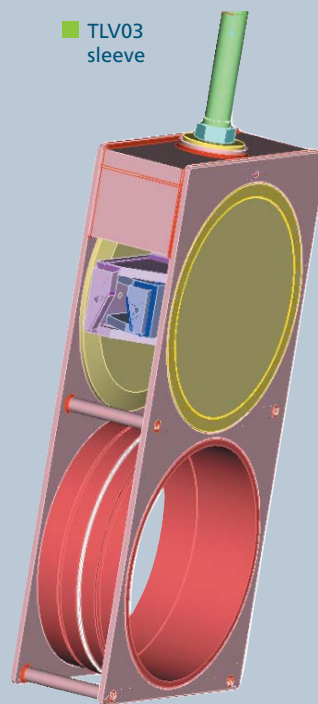


TLV03 design

■ TLV Valves

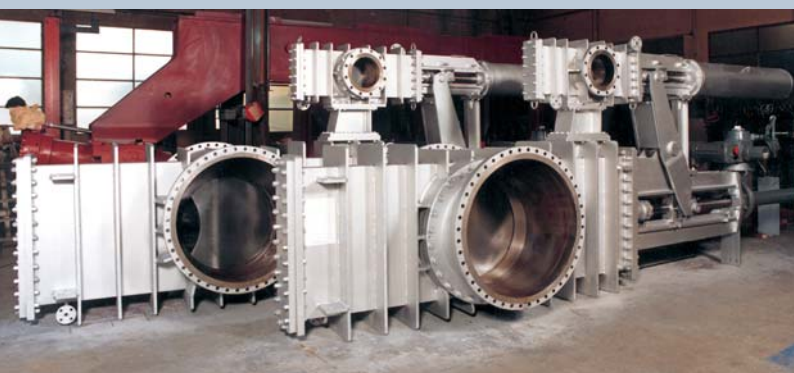
Main design features

- One-piece body
- Double block & bleed design
- Tight sealing throughout the actuation process
- Through conduit design in opened position
- Fixed wedge in the body to avoid jamming during actuation
- Stellite and protected sealing surfaces
- Reduced wear of sealing areas
- Removable bottom



Advantages of this design

1. Improved tightness.
2. Increased service lifetime.
3. Easy maintenance.



■ Linked Transfer Line Valve and Decoking Valves

Agreements and quality management

ISO 9001

ISO 9001 certified since 1991. ISO 9001:2008
Notified Body: Lloyd's Register Quality Assurance.

ISO 14001

Environmental Management System certified to ISO 14001: 2004
Standards by Lloyd's Register Quality Assurance.

PED 97/23/EC

Compliance with the European Pressure Equipment Directive.
Guichon Valves is certified according to Appendix III
Module H of Directive 97/23/EC.

Welding

Welding procedures qualified as per ASME and EN standards.



Experienced and
qualified welders



Machining shop equipped
for in-house production



Design department:
the company's heart



New production plant

Leading Valves Manufacturer

GUICHON VALVES was founded in **1921**, successfully expanded into the Petrochemical Sector in 1979 and has been in the specific market of ethylene cracking since 1989.

Today, we rank amongst the leading European suppliers of transfer line valves, thanks to our long experience and capability to supply customer-made valves solutions.

Guichon Valves has full control over the design, manufacturing and control of its products and also provides full after-sales service.

Our know-how in manufacturing high performance valves, added to the expertise of our engineering and design department have ensured constant progress in the development of innovative and effective solutions, produced by our Company.

Guichon Valves : an expert to optimize your process.



Petrochemicals



GUICHON Valves

also has special know-how
in Fluid Catalytic Cracking / FCC
and Catalytic reforming / CCR valves

Some references for TLV

MITSUBISHI – Yuka Kajima (Japan)
450'000 tpy - Engineering T.E.C

CNTIEC - TIANJIN UNITED CHEMICAL Corp.
(China)
140'000 tpy - Engineering T.E.C

SHELL PETROCHIMIE MÉDITERRANÉE
BERRE (France)
Engineering TECHNIP FRANCE

O.A.O NIZHNEKAMSKNEFTEKHIM
TATARSTAN (Russia)
140'000 tpy - Engineering ABB Lummus

NAPHTACHIMIE - Lavera (France)
670'000 tpy - Engineering ABB Lummus

COPENOR / ATOCHEM - Dunkerque
(France)
300'000 tpy - Engineering Technip

Sizes :
DN 6 " - DN 10 " - DN 12 " - DN 14 "
DN 16 " - DN 18 " - DN 20 " - DN 24 "
DN 30 " - DN 36 " - DN 42 "

Pressure classes :
150 lbs - 300 lbs

Actuators :
Electric and pneumatic

All these valves are in accordance
with Lummus Process

26 rue Paul Girod - Z.I. Bissy
73000 Chambéry France

Tél : + 33 (0)4 79 44 59 00
Fax : + 33 (0)4 79 44 59 01

E-mail : info@guichon.com
www.guichon.com